

Anti-ableist developments

Anti-ableist developments

Accessible university events and inclusive research methods training



An image of a disabled activist holding a sign reading 'Nothing about us without us' by Elisney is licensed under CC BY-NC-ND 2.0.

On this page:

- [Accessible Events](#)
- [Inclusive Research Methods](#)

University researchers: [Dr Lauren White \(https://sheffield.ac.uk/education/people/academic/smi/lauren-white\)](https://sheffield.ac.uk/education/people/academic/smi/lauren-white) and [Dr Nikita Hayden \(https://www.sheffield.ac.uk/education/people/academic/edu/nikita-hayden\)](https://www.sheffield.ac.uk/education/people/academic/edu/nikita-hayden)*

Project Partners: [Speakup Self-advocacy, Rotherham \(https://www.speakup.org.uk\)](https://www.speakup.org.uk)

*thanks also to Dr Daniel P. Jones who worked on this Priority Area from May 2024 - September 2025

This Priority Areas is split into two areas of work:

Accessible Events

Problem: Inaccessible academic events routinely held in universities that exclude disabled people.

Strategic plan: Develop advice, guidelines and case studies of inclusive events

Workplan: Collaborate with Disabled People's Organisations and key colleagues in the University to identify and exemplify good practice.

Deliverables:

- **Advice and guidance for hosting inclusive university events**
(<https://shef.ac.uk/ihuman/waarc/advice-and-guidance-hosting-inclusive-university-events>)
 - **Case Studies of Inclusive events in Practice co-created with Disabled People's Organisations** (<https://shef.ac.uk/ihuman/waarc/case-studies>)
-

Inclusive Research Methods

Problem: Insufficient institutional knowledge about disability inclusive research methods.

Strategic plan: Curate a collection of disability inclusive research methods resources and course

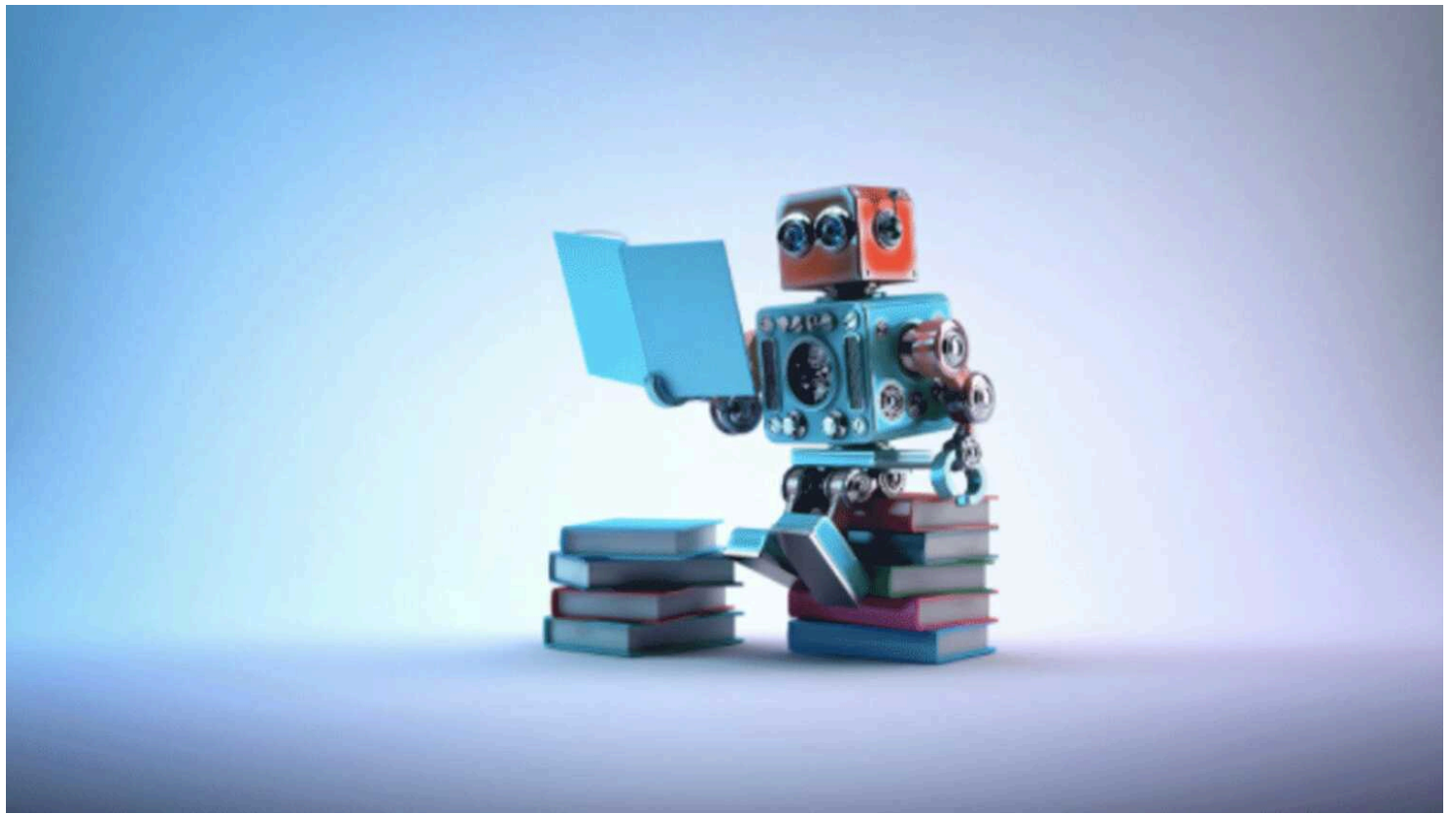
Workplan: Collaborate with Speakup Self-advocacy and other disabled researchers to create inclusive methods resources that draw upon creative methods.

Deliverables:

- **Inclusive Research Methods resources** (<https://shef.ac.uk/ihuman/waarc/anti-ableist-developments/inclusive-research-methods>) - What kinds of research methods and approaches to research engage disabled people in collaborative and equitable ways?
 - **Co-production and participatory research**
(<https://www.sheffield.ac.uk/ihuman/waarc/anti-ableist-resources/co-production-and-participatory-research>) - examples of collaborative research with non-academic partners that enhance the research exercise.
-

Related information

More information on our non-academic Project Partners (<https://sheffield.ac.uk/ihuman/waarc/non-academic-partners>)



iHuman

How we understand being 'human' differs between disciplines and has changed radically over time. We are living in an age marked by rapid growth in knowledge about the human body and brain, and new technologies with the potential to change them.

Centres of excellence

The University's cross-faculty research centres harness our interdisciplinary expertise to solve the world's most pressing challenges.

Centres of excellence
